



## Care & Installation Instructions for Terrazzo Sinks & Vanity Tops

### Thank You for Choosing an Eden Bath™ Terrazzo Product!

To help you stay as happy with your Eden Bath™ terrazzo product as the day it was installed, please follow the care and cleaning instructions provided in this document. If you have other questions, please feel free to contact our Customer Service department at 1.877.578.5584 or [sales@edenbath.com](mailto:sales@edenbath.com). For more information about your Eden Bath™ terrazzo product, please visit our website at [www.EdenBath.com](http://www.EdenBath.com).

### GENERAL

Your Eden Bath™ terrazzo product has been handcrafted to be functional and to look amazing at the same time. Terrazzo is a product made by mixing gravel, glass, quartz stone, marble or other aggregates with cement, then grinding and polishing the surface. Terrazzo sanitary ware is precast in one whole piece with customized molds. It has the advantages of hardness, diverse colors, wear resistance and stain resistance, and can be used outdoors. To ensure the beauty and durability of terrazzo, proper care is essential. This manual is intended to provide guidance on the daily care, cleaning, maintenance and restoration of terrazzo.

The following provides important and helpful information for you to install and use your terrazzo sink or vanity top. Please read carefully before use.

### INSTALLATION TIPS

*The following installation guide and its associated photos are merely an informative example of how a glass vessel sink is installed and is not an exact representation of the sink you are installing. We recommend that installation should only be completed by a trained plumber. Eden Bath, its dealers, and affiliates take no responsibility for the information provided below and will not be liable for any misuse or damage caused by using this information.*



#### VESSEL / ABOVE COUNTER MOUNTING

In the "above counter method" the vessel sink is held in place by either 1) the drain, a mounting ring between the sink and the countertop and the weight of the sink itself or 2) the drain, adhesive between the flat bottom of the sink and the countertop, and the weight of the sink itself. We recommend using a mounting ring with glass sinks for sink stability, a cleaner look and to allow space for cleaning under the sink.

Ensure you have the appropriately sized hole in your countertop. It should be just large enough to allow the threaded drainpipe to fit through it but not the nut that is screwed on to this pipe. A 1-3/4" hole is recommended for Eden Bath Vessel Sinks.

Place the mounting ring and rubber gaskets on the counter, centered with the drain hole. If you are not using a mounting ring, apply a moderate amount of clear kitchen and bath rated adhesive / caulking underneath the sink on the flattest part around the drain. Flip the sink over and set it on the mounting ring or countertop, lining up the hole in your sink and the hole in the countertop. If silicone ends up in areas not covered by a sink or backsplash, be sure to remove it immediately or it may leave a stain.

Remove the nut attached to the threaded pipe of the drain and place the drain assembly along with the upper most rubber drain gasket (if provided) into the sink drain hole.

#### DRAIN ATTACHMENT

From underneath the countertop, attach the lower most rubber gasket and the nut onto the drainpipe. Ensure the drain tail pipe is seated inside the P trap adapter / female trap adapter as shown.

Thoroughly tighten the nut onto the threaded pipe of the drain, securing the sink and drain in place.



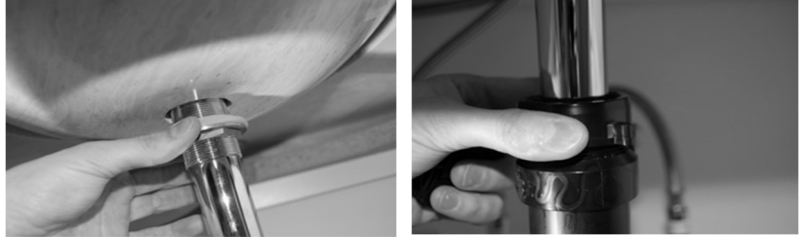


## Care & Installation Instructions for Terrazzo Sinks & Vanity Tops

Tighten the female trap adapter attached to your drainage pipe until it securely grips the drains tailpipe.

Please **DO NOT OVERTIGHTEN THE DRAIN** or it could cause your sink or counter to crack.

**Note:** Occasionally, plumbers' putty or silicone may be required between the drain and sink to ensure a leak proof seal. Test this by running the water and evaluating.



### CLEANING & CARE OF YOUR TERRAZZO PRODUCT

#### Daily Maintenance

- **Keep it dry:** Try to avoid prolonged contact with water or other liquids on the terrazzo surface to prevent the material from absorbing water and swelling, causing deformation.
- **Avoid scratch:** Avoid using sharp objects on the terrazzo surface to prevent scratching the surface coating.
- **Regular cleaning:** Use neutral detergent and soft cloth to clean the terrazzo surface regularly to remove dust and stains.

#### Cleaning

- **Neutral cleaner:** It is recommended to use a pH neutral cleaner and avoid using acidic or alkaline cleaner to prevent damage to the material surface.
- **Wipe with soft cloth:** Use a soft cloth or sponge to wipe the material surface, avoid using rough brushes or abrasive pads.
- **Remove stains:** For stains that are difficult to remove, you can try to use special stone cleaner or alcohol, but please test it in an inconspicuous place before use to ensure that the material will not be damaged.

#### Maintenance

- **Stone sealing:** It is recommended to regularly apply stone-specific sealant to the surface of terrazzo to enhance its waterproof and anti-fouling properties.
- **Stone renovation:** After long-term use, the surface of terrazzo may appear worn or scratched. At this time, you can ask professionals to renovate the stone to restore its luster.

#### Precautions

- **Avoid using chemicals:** Avoid exposing terrazzo to chemicals, paints, pigments and other substances that may damage the material.
- **Regular inspection:** Check the surface of terrazzo regularly, and deal with problems in time to prevent them from getting worse.
- **Avoid high-temperature water:** Pay special attention to avoid pouring hot water or steam higher than 70° directly on the surface of terrazzo, because high temperature may cause thermal expansion and contraction of the stone surface, causing cracks or deformation.

#### Repair

- **Scratch repair:** For minor scratches, stone repair agents can be used to repair them. Apply the repair agent to the scratched area and wipe it smooth with a soft cloth.
- **Damage repair:** For more serious damage, such as potholes, cracks, etc., it is recommended to ask professionals to repair it.

#### Conclusion

With proper care and maintenance, terrazzo will maintain its beauty and durability. The maintenance guidelines provided in this manual are for reference only. If you have any questions, it is recommended to consult professional stone maintenance personnel.